

AQA - Black body radiations – GCSE Combined Science Physics

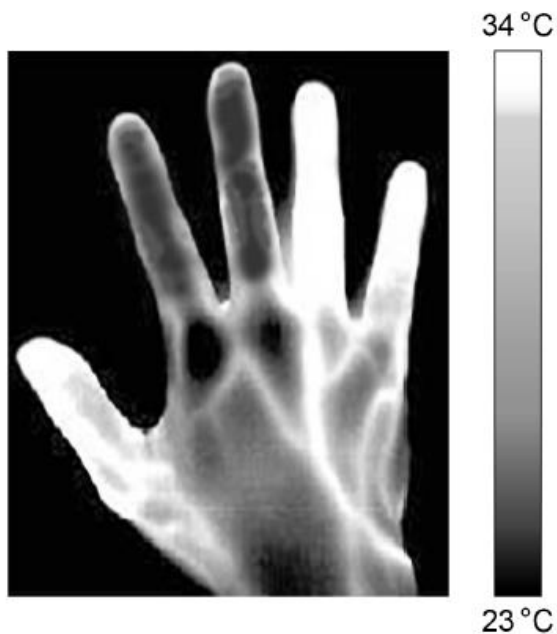
1. **June/2021/Paper_2H/No.5(5.1_5.2)**

0 5

Different parts of the electromagnetic spectrum are used in medical imaging.

Figure 8 shows an image of a person's hand taken with an infrared camera.

Figure 8



0 5 . 1

Explain why the infrared camera is able to show that parts of the hand are at different temperatures.

[2 marks]

0 5 . 2 Infrared has a range of wavelengths from 700 nm to 1 mm.

Which part of the electromagnetic spectrum would have waves with a wavelength of 6.5×10^{-7} m?

[1 mark]

Tick (✓) **one** box.

Infrared

Microwaves

Radio waves

Visible light