

AQA - Reproduction – GCSE Combined Science Biology

1. **May/2020/Paper_2F/No.1**

0 1

This question is about reproduction.

0 1 . 1

Which **two** statements are true for sexual reproduction in humans?

[2 marks]

Tick (✓) **two** boxes.

Gametes are formed.

Offspring are clones.

Offspring are genetically identical to parents.

Only one parent is involved.

Sperm and egg fuse.

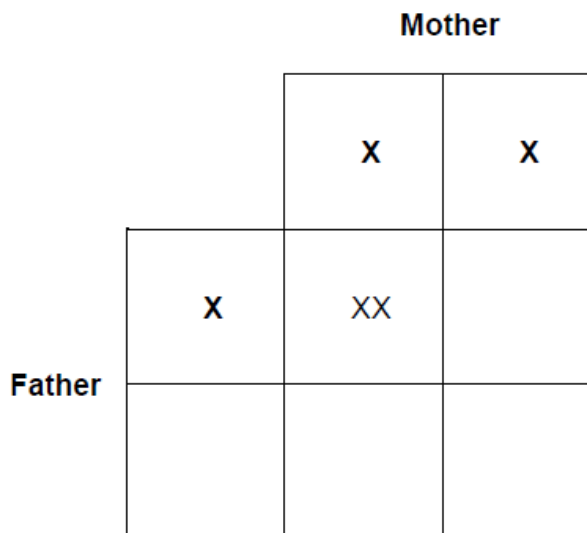
0 1 . 2

Humans reproduce by sexual reproduction.

Complete **Figure 1** to show the inheritance of sex.

[3 marks]

Figure 1



0 1 . 3 Draw a ring around the genotype of all male children in **Figure 1**.

[1 mark]

0 1 . 4 When children reach puberty, reproductive hormones cause changes in their bodies.

Draw **one** line from each hormone to the change the hormone causes at puberty.

[2 marks]

Hormone	Change the hormone causes at puberty
	Breasts develop
Oestrogen	
	Skin turns lighter
	Voice becomes deeper
Testosterone	
	Wisdom teeth appear

A woman does **not** want to become pregnant.

She considers two methods of contraception.

0 1 . 5

Draw **one** line from each method of contraception to how the method prevents pregnancy.

[2 marks]

Method of contraception

How the method prevents pregnancy

Condom

Embryos do not implant in the uterus

Hormones stop eggs maturing

Oral contraceptive (the pill)

Sperm are killed

Sperm do not reach the egg

0 1 . 6

Give **one** advantage and **one** disadvantage of taking oral contraceptives to prevent pregnancy.

[2 marks]

Advantage _____

Disadvantage _____

2. June/2019/Paper_2F/No.3

0 3

Animals have adaptations to survive in their environment.

These adaptations may be structural, behavioural or functional.

0 3 . 1

Draw **one** line from each animal adaptation to the type of adaptation it is.

[2 marks]

Animal adaptation

Type of adaptation



Male palm cockatoos use sticks to beat on hollow branches to attract females.

Structural



The harmless hornet moth has black and yellow stripes to look like a bee or wasp.

Behavioural



Sea spiders have automatic muscle contractions that move oxygen around their bodies.

Functional

Plants also have adaptations.

Orchid plants have adaptations which make them one of the most successful plant groups.

Orchids rely on insects for pollination.

Figure 2 shows an orchid.

Figure 2



0 3 . 2 Which **two** features help orchids survive?

[2 marks]

Tick (✓) **two** boxes.

Brightly coloured flowers

Large quantities of pollen

No scent

Oval shaped leaves

Small leaves

Many orchid species grow in tropical rainforest ecosystems.

0 3 . 3 What name describes the variety of all the different species found in an ecosystem?

[1 mark]

Tick (✓) **one** box.

Biodiversity

Evolution

Feeding relationship

Habitat

0 3 . 4 Some species of orchid may become extinct because of deforestation.

Give **one** reason why tropical rainforests are being cut down.

[1 mark]

0 3 . 5 Give **one** factor that might cause a species of orchid to become extinct.

Do **not** refer to deforestation in your answer.

[1 mark]

Scientists have analysed the entire genetic material of one species of orchid.

0 3 . 6 What chemical is the genetic material made from?

[1 mark]

0 3 . 7 What is the name for the entire genetic material of an organism?

[1 mark]
