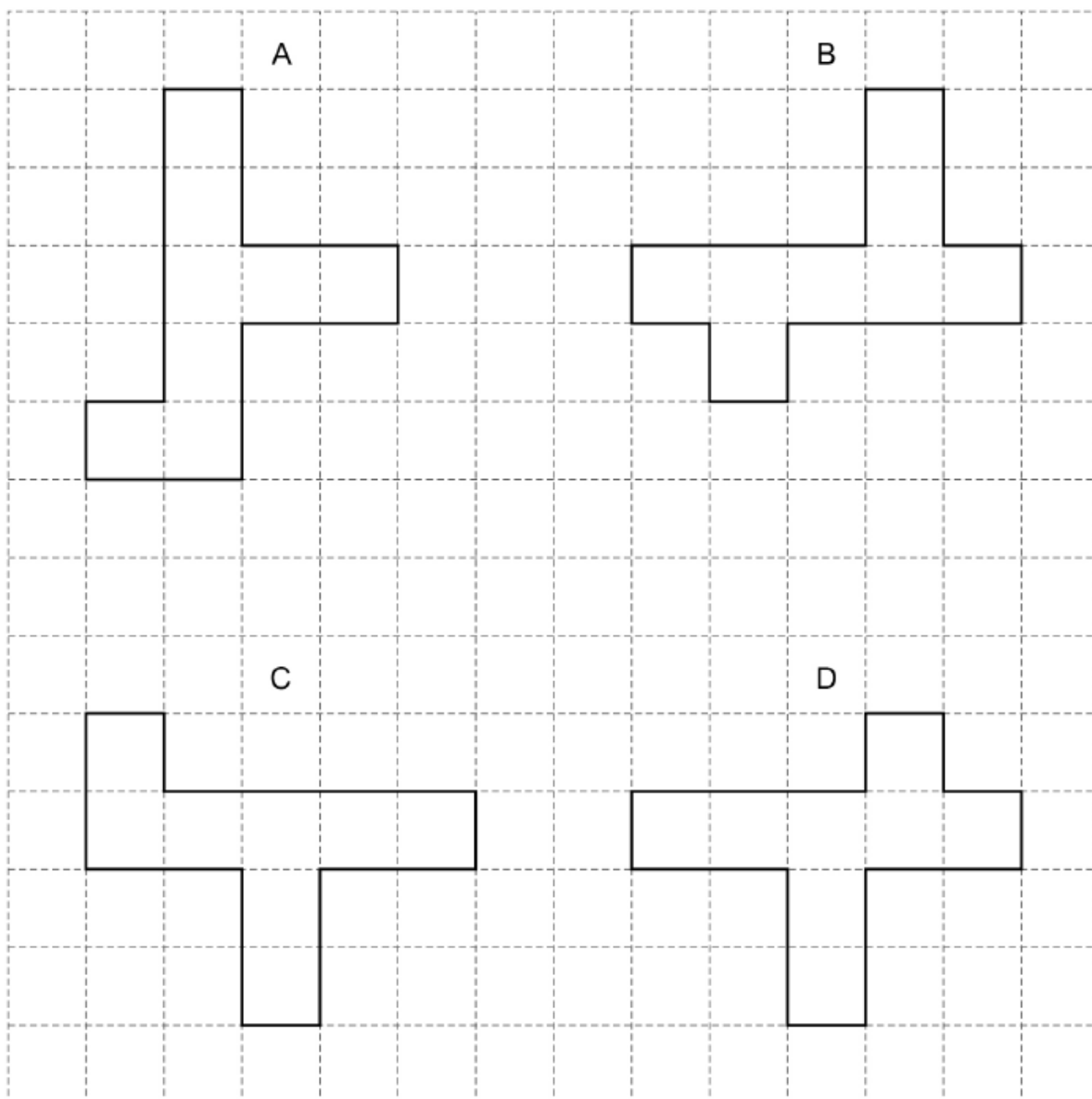


AQA - Measure and accuracy – GCSE Mathematics Paper-31. **May/2020/Paper_3F/No.4**

Shapes A, B, C and D are on a square grid.



Which two shapes are congruent?

Circle your answer.

[1 mark]

A and C

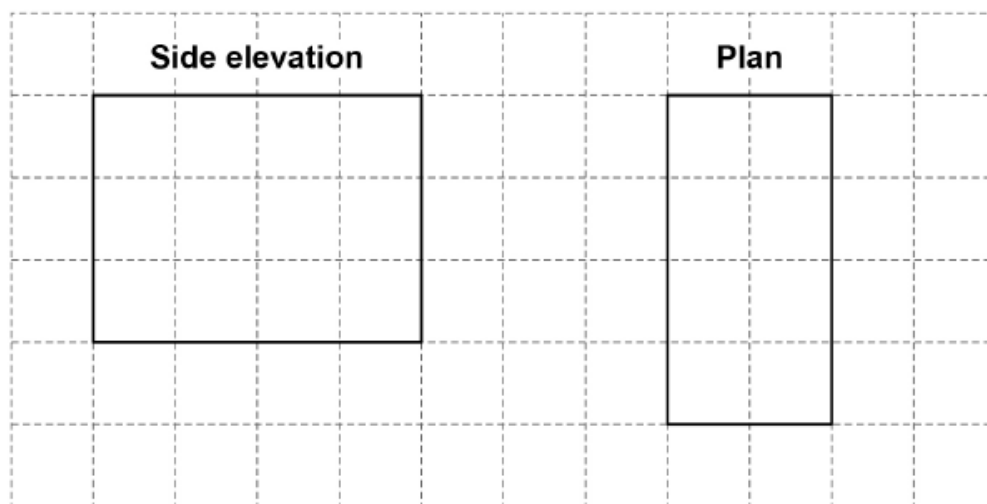
B and A

C and D

D and B

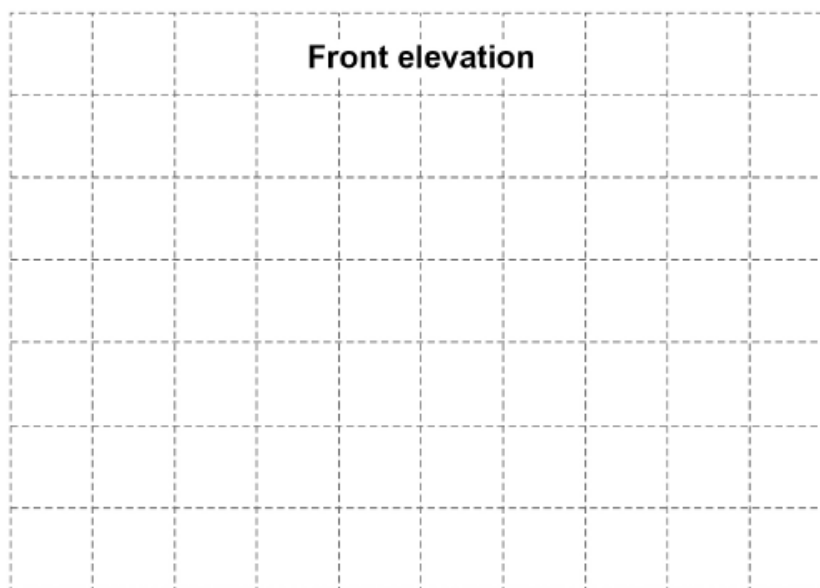
2. May/2020/Paper_3F/No.19

The side elevation and plan of a cuboid are shown on the centimetre grid.



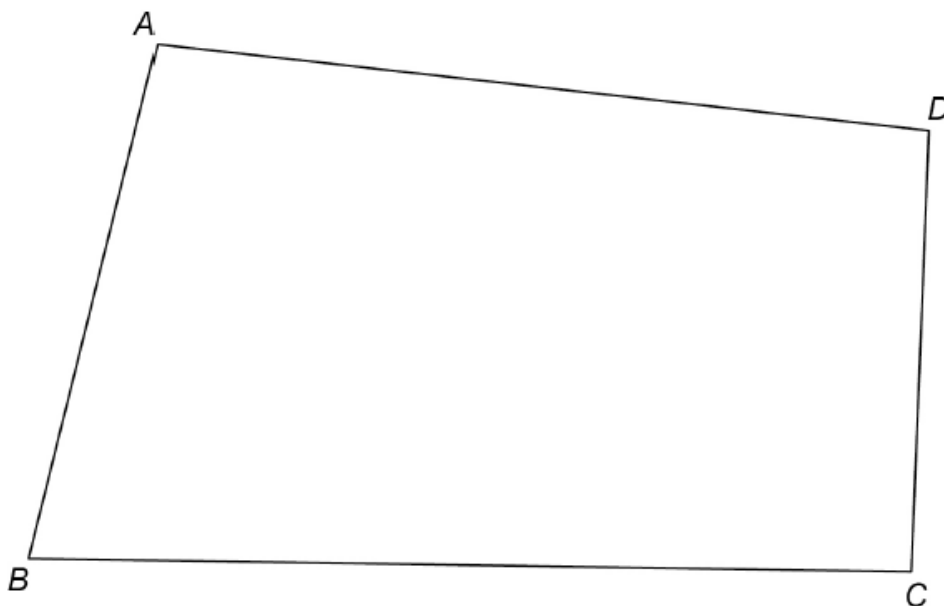
Draw the front elevation of the cuboid on this centimetre grid.

[2 marks]



3. May/2020/Paper_3F/No.22

$ABCD$ represents the plan of a field.



There is a path across the field that
starts at B
is the same distance from BA and BC .

Using ruler and compasses, show the position of the path.

[2 marks]

4. **May/2020/Paper_3H/No.5**

To the nearest 1000, there are 18 000 people at a festival.

(a) Write down the minimum possible number of people at the festival.

[1 mark]

Answer _____

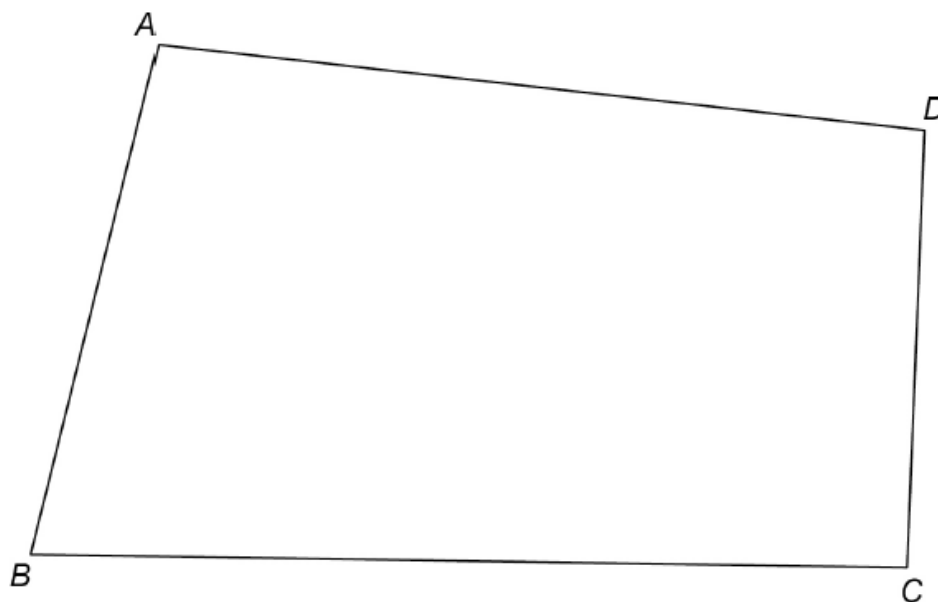
(b) Write down the maximum possible number of people at the festival.

[1 mark]

Answer _____

5. May/2020/Paper_3H/No.6

$ABCD$ represents the plan of a field.



There is a path across the field that
starts at B
is the same distance from BA and BC .

Using ruler and compasses, show the position of the path.

[2 marks]

6. June/2019/Paper_3H/No.6

To the nearest pound, Jon has £9

To the nearest 50p, Ellie has £6.50

Work out the maximum possible total amount of money.

[3 marks]

Answer £ _____

7. Nov/2019/Paper_3F/No.1

On a circle, which of these is **not** a straight line?

Circle your answer.

[1 mark]

circumference

radius

chord

diameter

8. **Nov/2019/Paper_3F/No.24**

An equilateral triangle has side length 16 metres.

Using ruler and compasses only, construct a scale drawing of the triangle.

Use the scale 1 centimetre represents 2 metres.

[3 marks]

Scale: 1 cm represents 2 m

9. Nov/2019/Paper_3H/No.4

When rounded to 3 significant figures, $x = 6.37$

Circle the correct error interval.

[1 mark]

$$6.365 \leq x < 6.375$$

$$6.36 \leq x < 6.38$$

$$6.369 \leq x < 6.379$$

$$6.365 \leq x < 6.3749$$

10. Nov/2019/Paper_3H/No.7

An equilateral triangle has side length 16 metres.

Using ruler and compasses only, construct a scale drawing of the triangle.

Use the scale 1 centimetre represents 2 metres.

[3 marks]

Scale: 1 cm represents 2 m