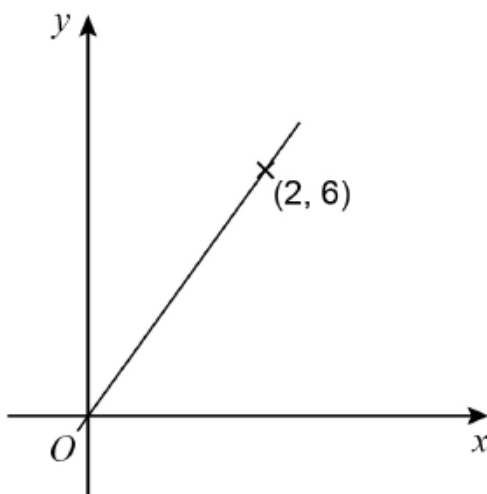


AQA - Graphs – GCSE Mathematics Paper-11. **May/2020/Paper_1F/No.17**A straight line passes through O and $(2, 6)$ 

Circle the equation of the line.

[1 mark]

$y = x + 4$

$y = 6$

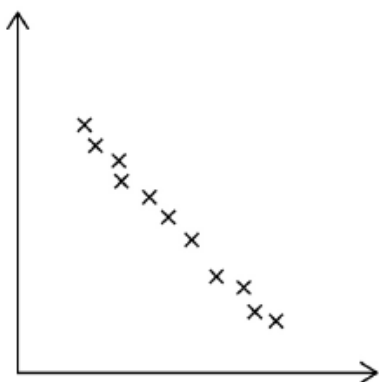
$y = 3x$

$y = \frac{1}{3}x$

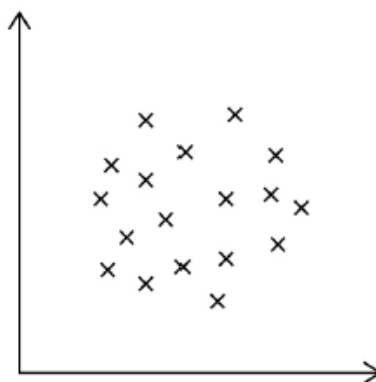
2. May/2020/Paper_1H/No.6

A and B are scatter graphs.

Graph A



Graph B



What type of correlation is shown by each graph?

Choose from

- Weak positive
- Strong positive
- Weak negative
- Strong negative
- No correlation

[2 marks]

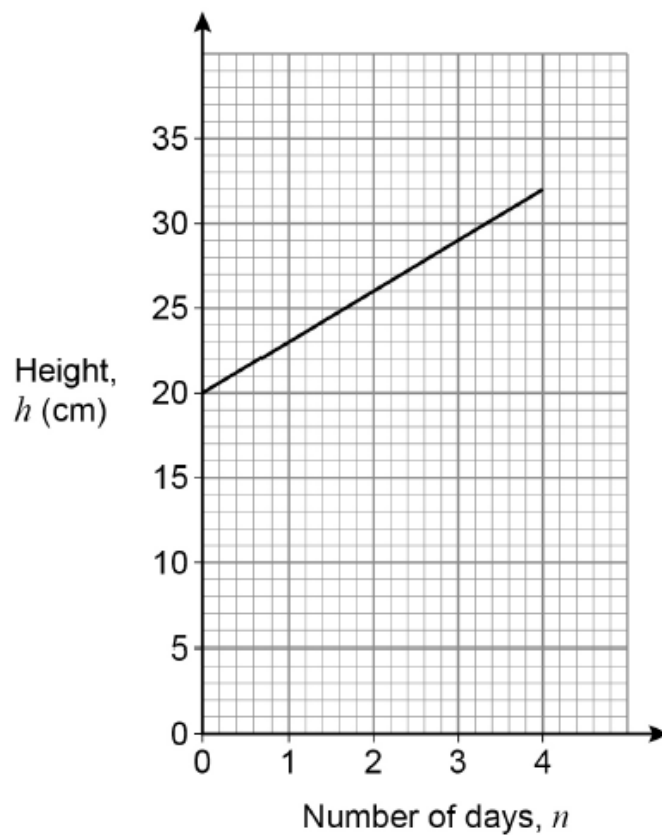
Graph A _____

Graph B _____

3. May/2020/Paper_1H/No.17

Jim buys a plant of height 20 cm

The graph shows how the height of the plant changes during the next 4 days.



Work out a formula for h in terms of n .

[3 marks]

Answer _____

4. **N0v/2020/Paper_1F/No.17**

Draw the graph of $y = 3x - 1$ for values of x from -1 to 3

[3 marks]

